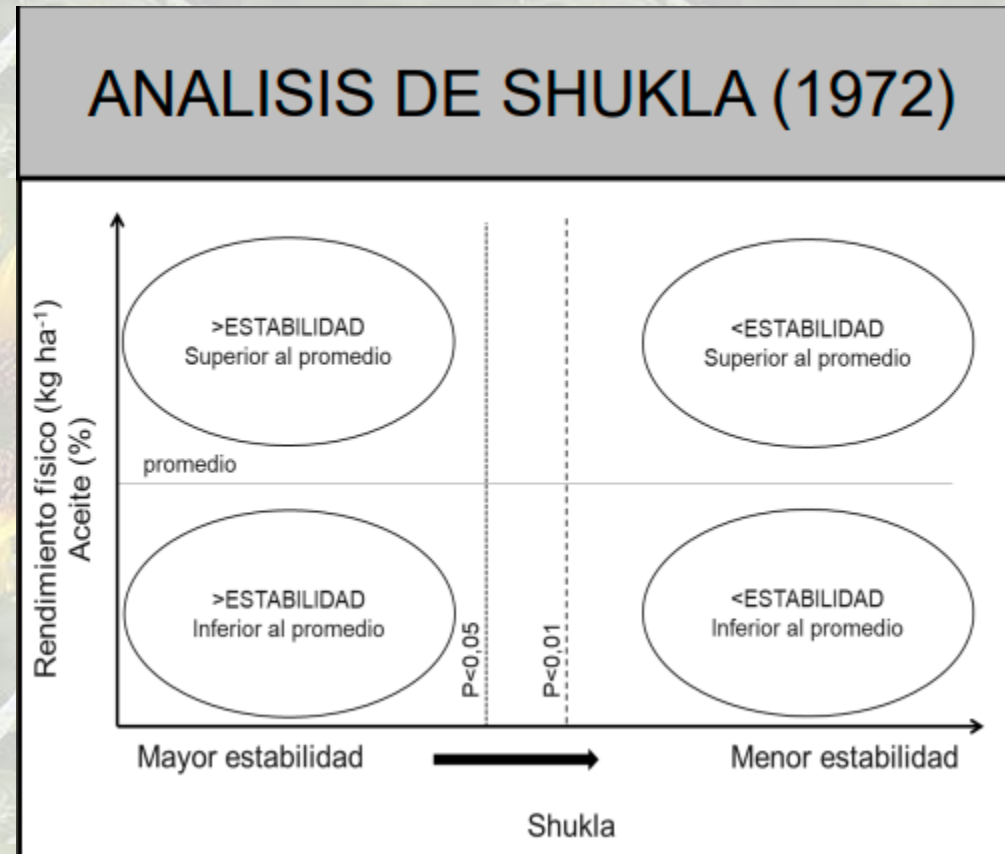
A field of sunflowers with a large one in the foreground. The sunflowers are yellow with brown centers. The background is a soft-focus field of more sunflowers.

Estabilidad y adaptabilidad genotípica de girasol en la zona centro-sur de las ultimas campañas

Ing. Agr. (M. Sc.) Carolina Troglia

METODOLOGIA

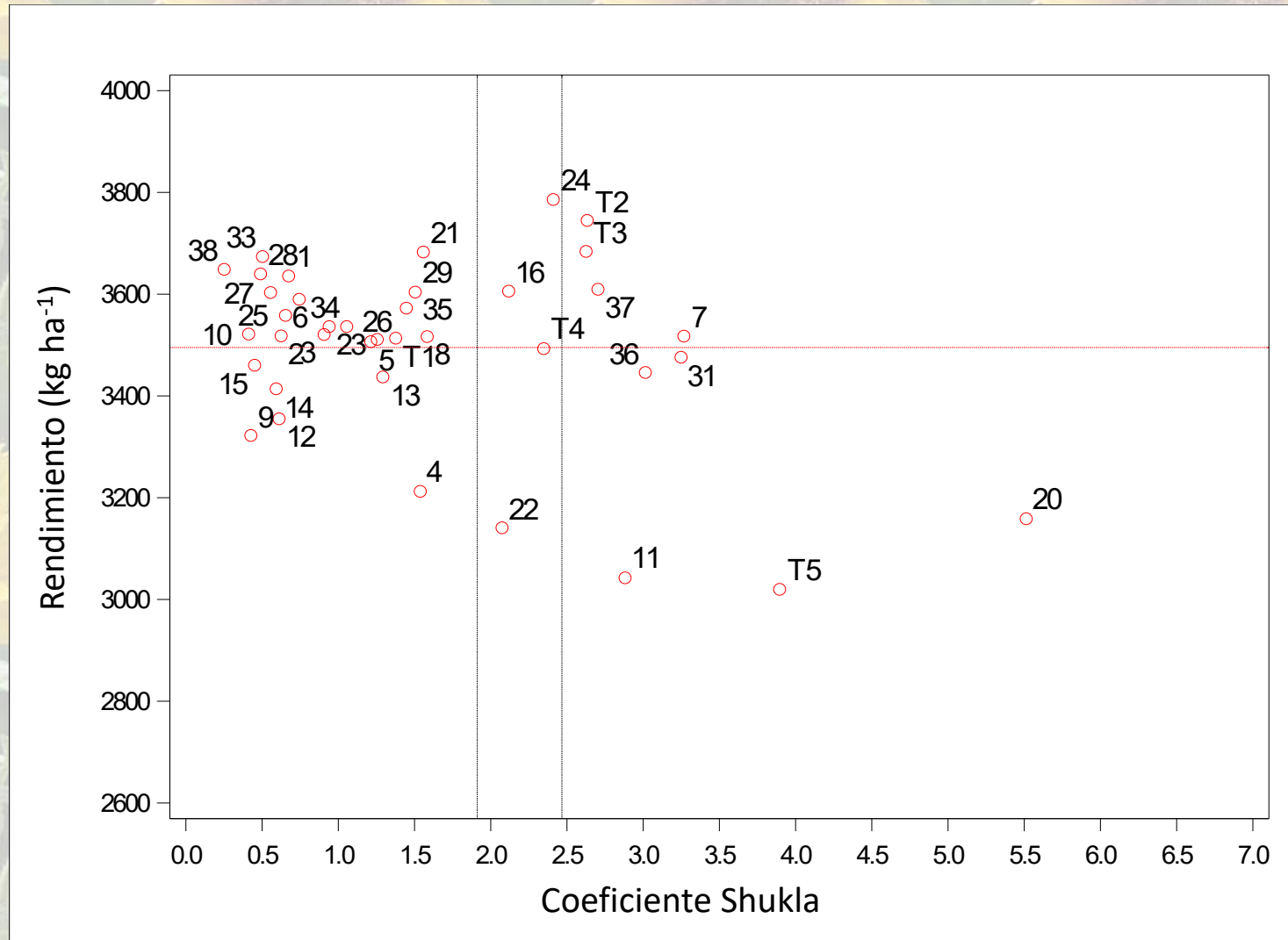
- Los datos se obtuvieron de los ECR correspondientes a la red de girasol de la zona centro-sur de Argentina publicados en la pagina web de ASAGIR e INTA. Las variables fueron Rendimiento (kg ha^{-1}) y contenido de aceite (%).
- La metodología utilizada fue



CAMPAÑA 2024/25



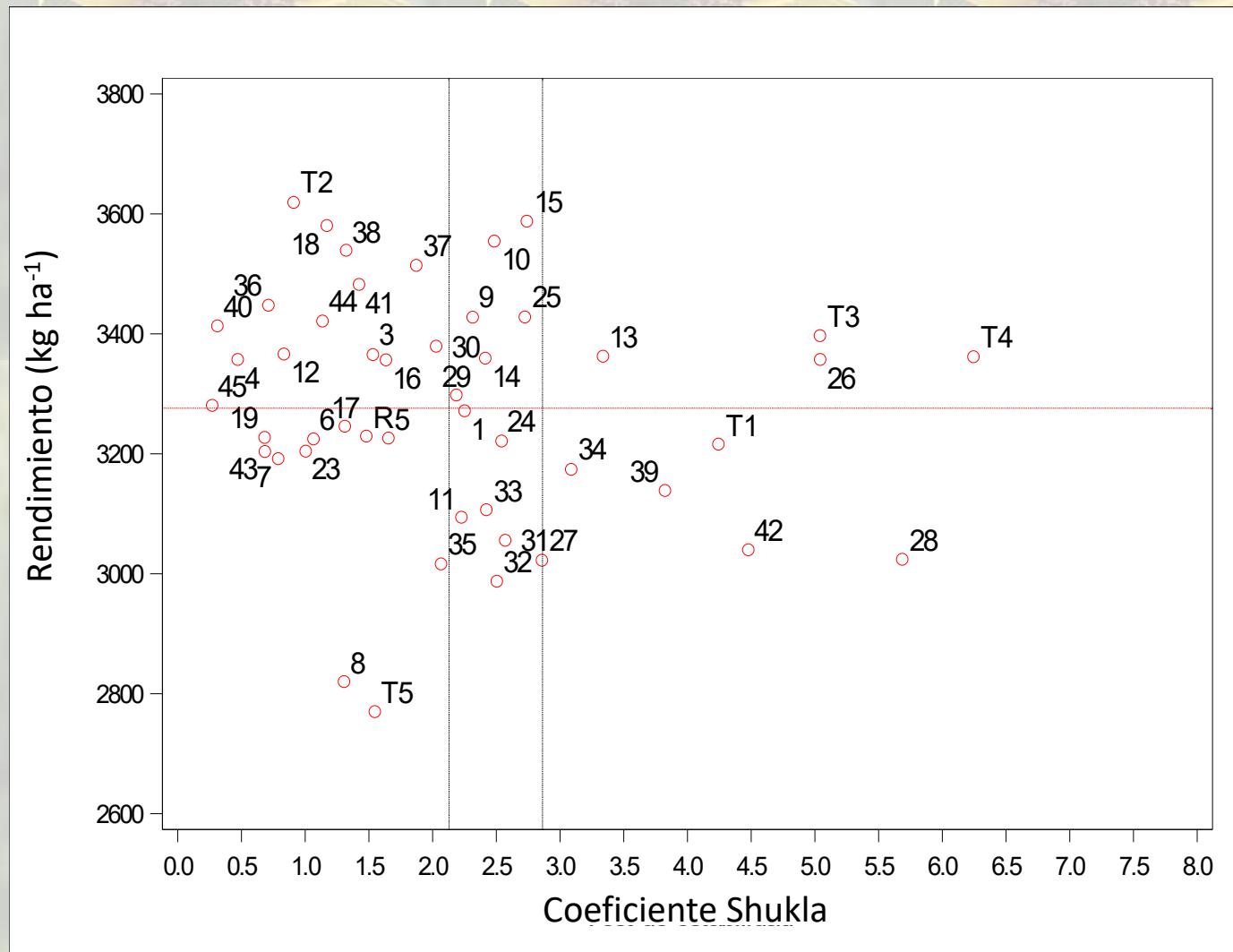
ID	Hibrido	Empresa
1	ZT 74L74 CL	ZETA Semillas
2	ZT 74H78 CL	ZETA Semillas
3	NUSOL 4175 CL	NUSEED
4	NUSOL 4180 CL Plus	NUSEED
5	PARAISO 1800 CL Plus	NUSEED
6	PARAISO 1500 CL Plus AO	NUSEED
7	CACIQUE 2,23 CL Plus	EL CENCERRO
8	LG X344 CL	LIMAGRAIN
9	ACA 216 CLDM	ACA
10	ACA 220 CLDM	ACA
11	20NO214	ACA
12	ARGENSOL 76 CL	ARGENETICS
13	ARGENSOL 78 CL	ARGENETICS
14	ADV 5407 CL	ADVANTA
15	ADV 5310 CL	ADVANTA
16	ADV 5505CL	ADVANTA
20	ORI-730 CL	RURALCO
21	ORISOL 740 CLDM	RURALCO
22	ORISOL 750 CL	RURALCO
23	NS1113 CL	NIDERA
24	NS1115 CL	NIDERA
25	NS1227 CL	NIDERA
26	ALZ Experimental	ALZ Agro
27	InSun 211 B22 CL	BASF
28	InSun Exp	BASF
29	Buck8243CL	BUCK
31	RGT ARLLEM CLP	RAGT
33	RGT HUEMULL CL	RAGT
34	BRVH280CL	BREVANT
35	BRV4225CL	BREVANT
36	P7214CL	PIONEER
37	NK 3969 CL	NK Semillas
38	NK 3979CLHO	NK Semillas



CAMPAÑA 2023/24



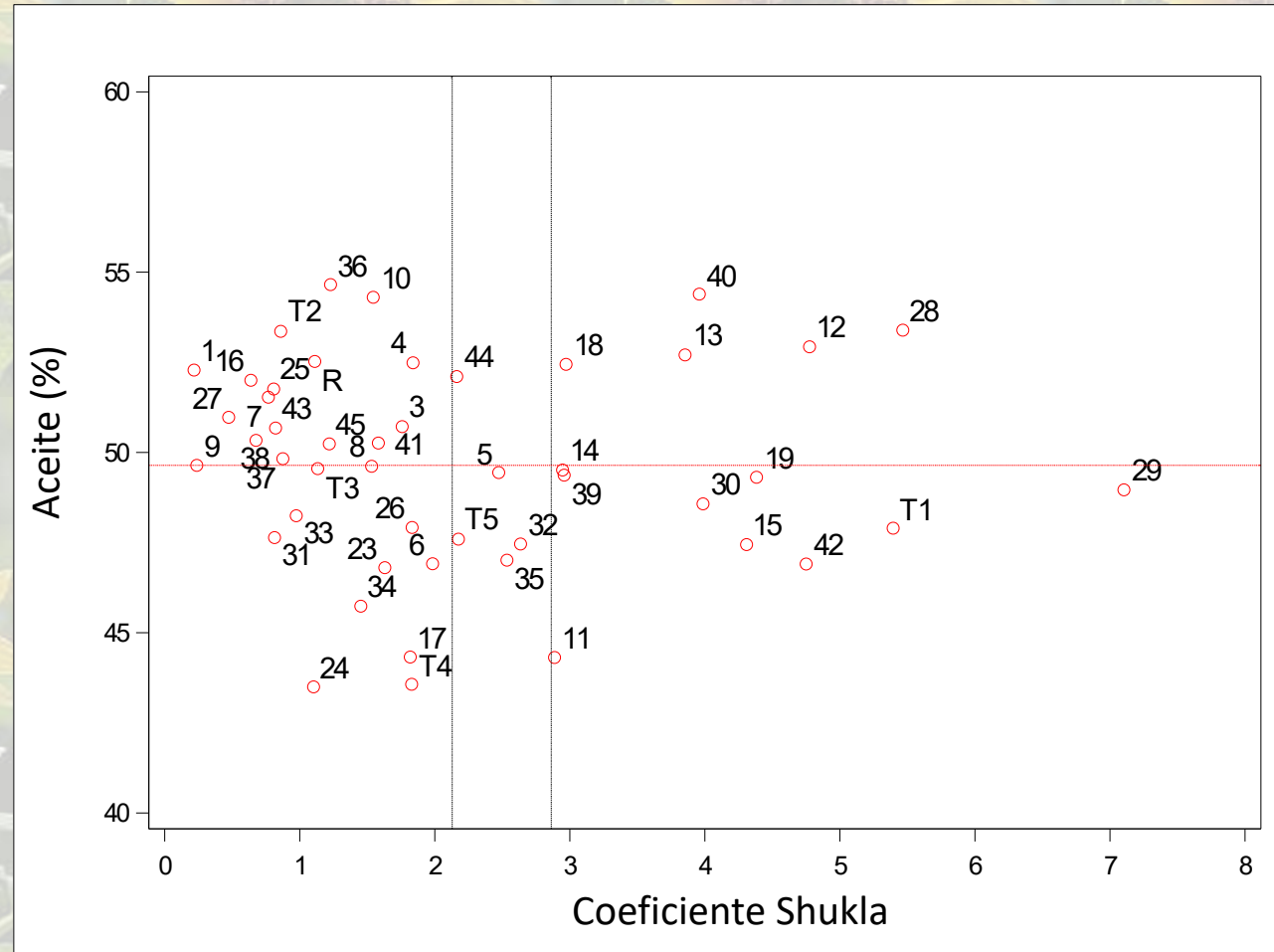
ID	Hibrido	Empresa
1	RGT OBELLISCO CL	RAGT
3	NUSOL 4175 CL	NUSEED
4	NUSOL 4180 CL Plus	NUSEED
5	PARAISO 1800 CL PIUS	NUSEED
6	PARAISO 1500 CLP AO	NUSEED
7	CACIQUE 223 CL Plus	EL CENCERRO
8	CACIQUE 322 CL	EL CENCERRO
9	ACA 216 CLDM	ACA
10	ACA 220 CLDM	ACA
11	ACA 203 CLDM	ACA
12	ADV 5407 CL	ADVANTA
13	ADV 5310 CL	ADVANTA
14	LG 5710	LIMAGRAIN
15	LG50760 CL	LIMAGRAIN
16	PLYUS 59	GENEZE
17	PLYUS 53 CL	GENEZE
18	BRV 4225 CL	BREVANT
19	GROBOSOL 2318 CL	LOS GROBO
23	ORI 730 CL	RURALCo
24	ORISOL 740 CLDM	RURALCo
25	InSun 211 B22 CL	BASF
26	InSun 4B 2210 CL	BASF
27	Exp ORIGO 750	RURALCo
28	ACA EXP NO214	ACA
29	AEX 222 CL	PIONEER
30	ZT 74H78 CL	ZETA Semillas
31	BUCK355CL	BUCK
32	BUCK 363CL	BUCK
33	BGH8243	BUCK
34	Argensol 76 CL	ARGENETICS
35	Argensol 78 CL	ARGENETICS
36	NS 1113 CL	NIDERA
37	NS 1115 CL	NIDERA
38	NS 1227 CLHO	NIDERA
39	TAU 1812	Alpha Semillas
40	NK 3969 CL	NK Seeds
41	NK 3979 CLHO	NK Seeds
42	SUNNO23 RI	AGS
43	ALZ experimental CL	ALZ
44	BRV3633 CP	BREVANT
45	SPS 3125 CL	SYNGENTA



CAMPAÑA 2023/24



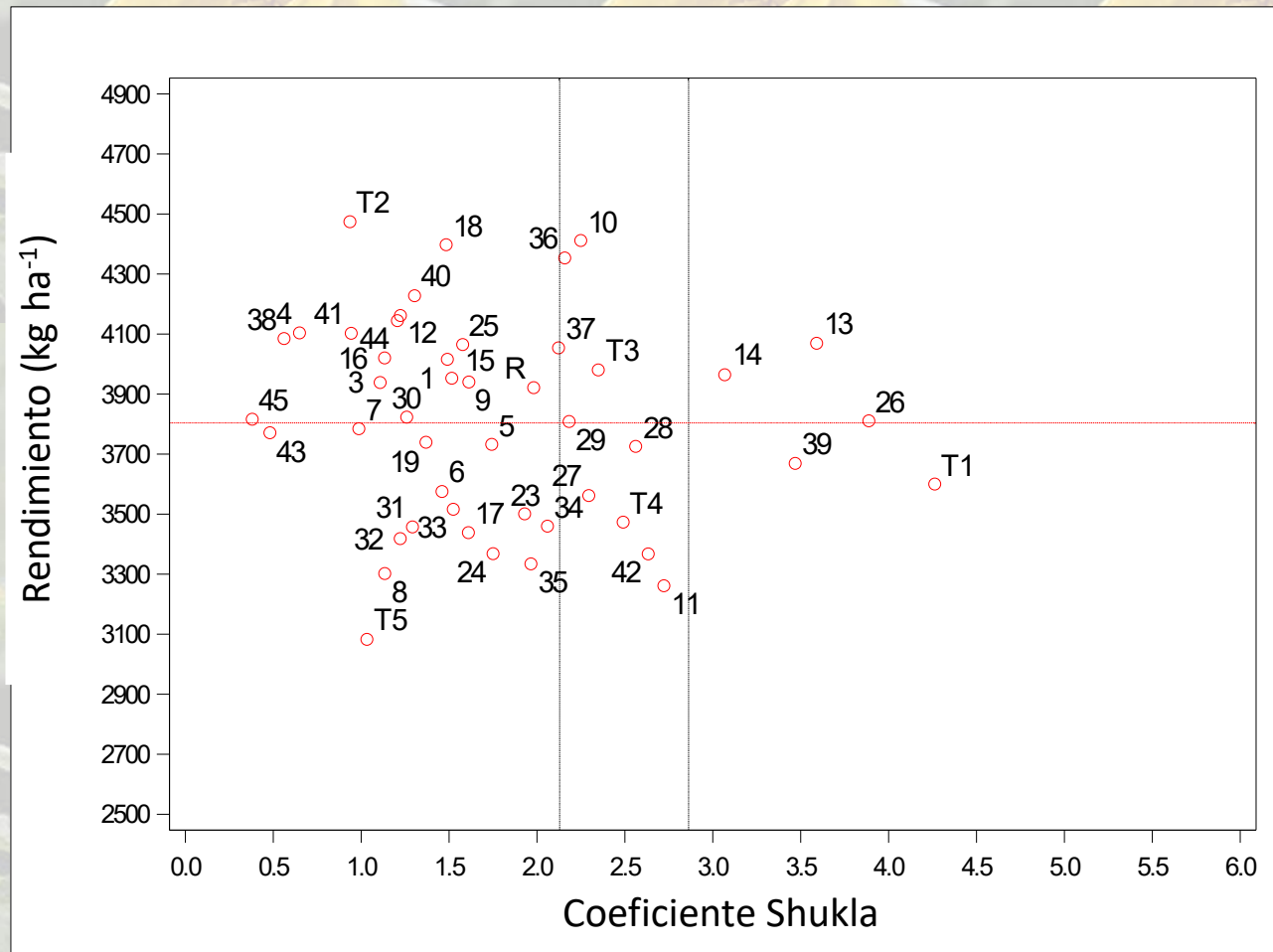
ID	Hibrido	Empresa
1	RGT OBELLISCO CL	RAGT
3	NUSOL 4175 CL	NUSEED
4	NUSOL 4180 CL Plus	NUSEED
5	PARAISO 1800 CL PIUS	NUSEED
6	PARAISO 1500 CLP AO	NUSEED
7	CACIQUE 223 CL Plus	EL CENCERRO
8	CACIQUE 322 CL	EL CENCERRO
9	ACA 216 CLDM	ACA
10	ACA 220 CLDM	ACA
11	ACA 203 CLDM	ACA
12	ADV 5407 CL	ADVANTA
13	ADV 5310 CL	ADVANTA
14	LG 5710	LIMAGRAIN
15	LG50760 CL	LIMAGRAIN
16	PLYUS 59	GENEZE
17	PLYUS 53 CL	GENEZE
18	BRV 4225 CL	BREVANT
19	GROBOSOL 2318 CL	LOS GROBO
23	ORI 730 CL	RURALCo
24	ORISOL 740 CLDM	RURALCo
25	InSun 211 B22 CL	BASF
26	InSun 4B 2210 CL	BASF
27	Exp ORIGO 750	RURALCo
28	ACA EXP NO214	ACA
29	AEX 222 CL	PIONEER
30	ZT 74H78 CL	ZETA Semillas
31	BUCK355CL	BUCK
32	BUCK 363CL	BUCK
33	BGH8243	BUCK
34	Argensol 76 CL	ARGENETICS
35	Argensol 78 CL	ARGENETICS
36	NS 1113 CL	NIDERA
37	NS 1115 CL	NIDERA
38	NS 1227 CLHO	NIDERA
39	TAU 1812	Alpha Semillas
40	NK 3969 CL	NK Seeds
41	NK 3979 CLHO	NK Seeds
42	SUNNO23 RI	AGS
43	ALZ experimental CL	ALZ
44	BRV3633 CP	BREVANT
45	SPS 3125 CL	SYNGENTA



CAMPAÑA 2023/24 – Rendimiento Ajustado



ID	Hibrido	Empresa
1	RGT OBELLISCO CL	RAGT
3	NUSOL 4175 CL	NUSEED
4	NUSOL 4180 CL Plus	NUSEED
5	PARAISO 1800 CL PIUS	NUSEED
6	PARAISO 1500 CLP AO	NUSEED
7	CACIQUE 223 CL Plus	EL CENCERRO
8	CACIQUE 322 CL	EL CENCERRO
9	ACA 216 CLDM	ACA
10	ACA 220 CLDM	ACA
11	ACA 203 CLDM	ACA
12	ADV 5407 CL	ADVANTA
13	ADV 5310 CL	ADVANTA
14	LG 5710	LIMAGRAIN
15	LG50760 CL	LIMAGRAIN
16	PLYUS 59	GENEZE
17	PLYUS 53 CL	GENEZE
18	BRV 4225 CL	BREVANT
19	GROBOSOL 2318 CL	LOS GROBO
23	ORI 730 CL	RURALCo
24	ORISOL 740 CLDM	RURALCo
25	InSun 211 B22 CL	BASF
26	InSun 4B 2210 CL	BASF
27	Exp ORIGO 750	RURALCo
28	ACA EXP NO214	ACA
29	AEX 222 CL	PIONEER
30	ZT 74H78 CL	ZETA Semillas
31	BUCK355CL	BUCK
32	BUCK 363CL	BUCK
33	BGH8243	BUCK
34	Argensol 76 CL	ARGENETICS
35	Argensol 78 CL	ARGENETICS
36	NS 1113 CL	NIDERA
37	NS 1115 CL	NIDERA
38	NS 1227 CLHO	NIDERA
39	TAU 1812	Alpha Semillas
40	NK 3969 CL	NK Seeds
41	NK 3979 CLHO	NK Seeds
42	SUNNO23 RI	AGS
43	ALZ experimental CL	ALZ
44	BRV3633 CP	BREVANT
45	SPS 3125 CL	SYNGENTA



CAMPAÑA 2022/23



ID	Hibrido	Empresa
1	NUSOL4145CL	NUSEED
2	NUSOL4175CL	NUSEED
3	NUSOL4180CLPlus	NUSEED
4	PARAISO1800CLPlus	NUSEED
5	LG5710	LIMAGRAIN
6	LG50760CL	LIMAGRAIN
7	ADV5407CL	ADVANTA
8	ADV5250	ADVANTA
9	CACIQUE322CL	EL CENCERRO
11	CACIQUE320CL	EL CENCERRO
12	InSun211B22CL	BASF
13	ZT74L68CL	ZETA Semillas
14	ZT74H55CL	ZETA Semillas
15	ARGENSOL076CL	ARGENETICS
16	Exp78CL	ARGENETICS
20	ACA869	ACA
21	ACA216CLDM	ACA
22	ACA220CL	ACA
23	19AC0010	ACA
26	RGT OBELLISCOCL	RAGT
27	RGT-4260MAX-CL	RAGT
28	BUCK 355 CL	BUCK
29	BUCK 363 CL	BUCK
30	NK 3969 CL	NKSeeds
31	SYN 3970 CL	NKSeeds
33	SYN 3990 CL	NKSeeds
34	SYN 3975 CLHO	NKSeeds
36	Plyus 53 CL	LIMAGRAIN
37	Plyus 59	LIMAGRAIN

